

# HELMET SIZING

## ADULT

HELMET SIZE	X-SMALL	SMALL	MEDIUM	LARGE	X-LARGE	2X-LARGE	3X-LARGE
USA HAT SIZE	6 5/8 - 6 3/4	6 7/8 - 7	7 1/8 - 7 1/4	7 3/8 - 7 1/2	7 5/8 - 7 3/4	7 7/8 - 8	8 1/8 - 8 1/4
INCHES	20 7/8 - 21 1/4	21 5/8 - 22	22 7/16 - 22 13/16	23 1/8 - 23 5/8	24 - 24 3/8	24 13/16 - 25 3/16	24 1/8 - 25 3/4
CENTIMETERS	53 - 54	55 - 56	57 - 58	59 - 60	61 - 62	63 - 64	65 - 66

## YOUTH

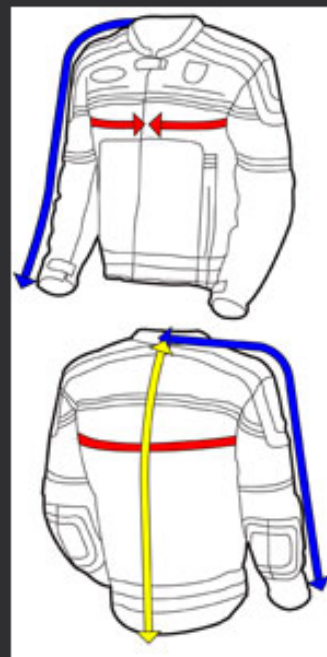
HELMET SIZE	SMALL	MEDIUM	LARGE
USA HAT SIZE	YOUTH SMALL	YOUTH MEDIUM	YOUTH LARGE
INCHES	18 7/8 - 19 1/4	19 3/4 - 20 1/8	20 1/2 - 20 7/8
CENTIMETERS	48 - 49	50 - 51	52 - 53

# JACKET/PANT SIZING

### Men's Jacket Sizing

Tall sizes are 1 1/2 to 2 inches longer in both body length and sleeve length.

Size	XS	S	M	L	XL	XXL	XXXL
Chest	34-36	36-38	38-40	42-44	44-46	46-48	48-50
Sleeve	31	32	33	34	35	36	37
Tall Size				LGT	XLT	2XLT	3XLT
Sleeve				34-36	35-37	36-38	37-39



### Men's Pant Sizing

Sizes	S	M	L	XL	XXL	XXXL
Waist	30-31	32-33	34-35	36-37	38-39	40-41
Inseam Regular	33	33	34	34	35	35
Inseam Tall			36	36	37	37

### Hurricane Suit

SIZE	CHEST	WAIST	INSEAM
US 38 - Euro 48	38-39	32-33.5	31
US 40 - Euro 50	40-41	34-35	32
US 42 - Euro 52	42-43	35.5-36.5	32
US 44 - Euro 54	44-45	37-38	33
US 46 - Euro 56	46-47	38.5-39.5	33
US 48 - Euro 58	48-49	40-41	34
US 50 - Euro 60	50-51	41.5-42.5	34

### Passport Suit

Size	S	M	L	XL	XXL	XXXL
Chest	36-38	38-40	42-44	44-46	46-48	48-50
Sleeve	32	33	34	35	36	37
Waist	30-31	32-33	34-35	36-37	38-39	40-41
Inseam	32	32	33	33	34	34

### Podium Racesuit

Alpha	U.S.	Euro	Chest	Waist	Inseam
SM	40	50	40"-41"	32"-33.5"	31"
MD	42	52	42"-43"	34"-35"	31"
LG	44	54	44"-45"	35.5"-36.5"	31"
XL	46	56	46"-47"	37"-38"	31"
2XL	48	58	48"-49"	38.5"-39.5"	31"
3XL	50	60	50"-51"	40"-41"	31"

### Women's Jacket Sizing

Lilly / Dynasty / Hat Trick / Voyage / Empress / Fury / Diamond / Fiore / Jewel

Size	XS	S	M	L	XL	XXL
Jacket Size	4	6	8	10	12	14-16
Bust	33	34-35	36-37	39-40	41-43	45
Sleeve	29.5	29.5-30	30.5-31	31.5-32	32.5-33	33.5-34

### NipTuck

Size	XS	S	M	L	XL	XXL
Jacket Size	2	4	6	8	10	12
Bust	31	33	35	37	39	41
Sleeve	29	29-29.5	29.5-30	30.5-31	31.5-32	32.5-33

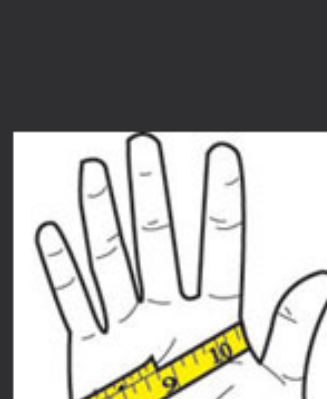


### Women's Plus Sizing

Size	1W	2W	3W
Dress	16-18	20-22	24
Bust	42-44	46-48	50-52
Waist	33-35	37-39	41-43

### Women's Pant Sizing

Savanah & Haley *Low Rise*	XS	S	M	L	XL	XXL	
Low Rise-Waist		26-27	28-29	29-30	30-31	32-33	36-37
Inseam		31	32	32	33	33	34
Hellina / Jewel / Empire	XS	S	M	L	XL	2XL	
Natural Waist		26-27	28-29	30-31	32-33	34-35	36-37
Inseam		31	32	32	33	33	34



### Gloves Men's (if half size pick next full size)

XS	SM	MD	LG	XL	XXL
5	6	7	8	9	10

### Gloves Women's (if half size pick next full size)

XS	SM	MD	LG	XL
5	6	7	8	9

The first step in the fitting process is to measure around your head at the temple above the eye brow. These are guidelines, a starting point, visit your **dealer** for assistance in selecting a proper fit.

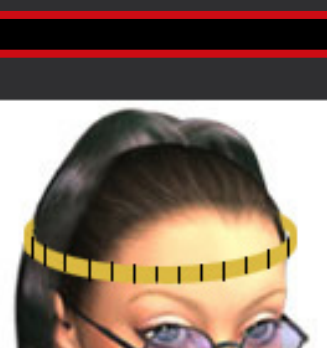
the placement of the measuring tape -->

### Adult Sizing Chart

Head Circumference	Size	Hat Size	Head Circumference
Inches			Metric
20 7/8 - 21 1/4"	XS	6 5/8-3/4	53-54cm
21 5/8 - 22"	SM	6 7/8-7	55-56cm
22 7/16 - 22 13/16"	MD	7 1/8-1/4	57-58cm
23 1/8 - 23 5/8"	LG	7 3/8-1/2	59-60cm
24 - 24 3/8"	XL	7 5/8-3/4	61-62cm
24 13/16 - 25 3/16"	XXL	7 7/8-8	63-64cm
25 9/16 - 26"	XXXL	8 1/8-1/4	65-66cm

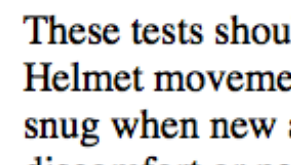
### Youth Sizing Chart

Head Circumference	Size	Hat Size	Head Circumference
Inches			Metric
18 7/8 - 19 1/4"	Y-SM	Y-SM	48-49cm
19 3/4 - 20 1/8"	Y-MD	Y-MD	50-51cm
20 1/2 - 20 7/8"	Y-LG	Y-LG	52-53cm

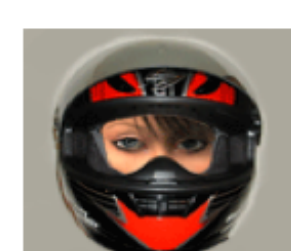


### Proper Helmet Fitment

These tests should be performed with the chin strap properly and securely in place. Helmet movement should also move the skin on your face and scalp. Helmets will fit snug when new and have a break in period. The helmet should not fit so tight as to cause discomfort or pain.



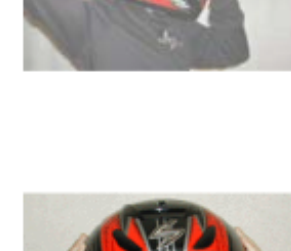
1. With the helmet in place and chin strap secured, shake your head side to side, if the helmet moves independently of your head then the helmet is too big. When performing this test, the helmet liner and cheek pads should be in direct contact with your skin. While shaking, your skin should move with the helmet.



2. Place one hand directly behind your head and push forward. Use your other hand and try to slip your little finger between your forehead and the helmet EPS liner. If you are able to slip your finger in, the helmet is too big.



3. Place your hands on the left and right side of helmet and move it back and forth, the helmet should not move independently from your skin. When the helmet is moving your skin should move with it.



4. To test for helmet lift, place one hand on the chin bar and push up (while the chin strap is secured), if the helmet comes off your head it is too big. Next, place one hand on the back and push up again, if your helmet lifts off your head the helmet is too big.